



## **IGCP 630 Meeting in Japan, 2017 (Permian-Triassic Climatic & Environmental Extremes and Biotic Response)**

*Sendai, Japan*

*June 14-20, 2017*

### **First Circular (Revised on 22nd Feb)**

We invite you to attend the International Congress for the International Geoscience Programme 630 (IGCP 630) on the *Permian – Triassic Climatic & Environmental Extremes and Biotic Response*, to be held in Sendai, Japan, from Wednesday 14 until Tuesday 20 2017. We look forward to meeting in Sendai anyone interested on this topics and related study fields.

**Deadline of Early Registration changes by 20th March!**



Sendai City from the Faculty of Science, Tohoku University (2015).

## **International Advising Committee:**

Prof. Zhong-Qiang Chen (China University of Geosciences, Wuhan, China)

Prof. Thomas J. Algeo (University of Cincinnati, USA)

Dr. Margaret L. Fraiser (University of Wisconsin-Milwaukee, USA)

Dr. Steve Kershaw (Brunel University, United Kingdom)

Prof. Jinnan Tong (China University of Geosciences, Wuhan, China)

Prof. Sylvie Crasquin (Université Pierre et Marie Curie, France)

Prof. Michael J. Benton (University of Bristol, United Kingdom)

Prof. Guang R. Shi (Deakin University, Australia)

Prof. Charles M. Henderson (University of Calgary, Canada)

Prof. Arnie Winguth (University of Texas at Arlington, USA)

Prof. Paul B. Wignall (University of Leeds, United Kingdom)

Prof. Kunio Kaiho (Tohoku University, Japan)

Prof. Ghulam Bhat (University of Jammu, India)

Prof. Yuri D. Zakharov (FEGI, Russia)

## **Organizing Committee Members**

Chairperson: Kunio KAIHO

Secretary: Noritoshi SUZUKI

Members: Yoshiaki AITA, Satoshi YAMAKITA, Satoshi TAKAHASHI, Ryosuke SAITO, and Zhong-Qiang CHEN

Programing for presentation: Kunio KAIHO, Satoshi TAKAHASHI, Ryosuke SAITO, and Zhong-Qiang CHEN

Field Trip Leaders:

- 1) Lower Triassic Shallow Water Deposits and the oldest ichthyopterygian fossil outcrop in South Kitakami: Noritoshi SUZUKI, Ryosuke SAITO, and Kunio KAIHO
- 2) Pelagic Lower–Middle Triassic Deposits and Pelagic Permian Limestone in Kuzuu: Yoshiaki AITA and Shun MUTO
- 3) Pelagic Permian–Triassic Boundary in North Kitakami: Satoshi TAKAHASHI, Satoshi YAMAKITA, and Shun MUTO

## Host

International Geosciences Program IGCP-630

## Sponsors

Sendai Convention Bureau

## Corporate Backers

Faculty of Science, Graduate School of Science, Tohoku University



## Session Place

**Place inside the Campus ( <http://www.sci.tohoku.ac.jp/campusmap/kita-aobayama/> ):**

H-04 Building (Science Complex C Building), at Kita-Aobayama Campus,  
Graduate School of Science, Tohoku University

**Address:**

c/o. Prof. Kunio Kaiho  
Department of Earth Science, Graduate School of Science, Tohoku University  
6-3, Aramaki, Aoba-ku, Sendai City, Miyagi Prefecture, 980-8578 JAPAN

## Contact E-mail address

Prof. Kunio KAIHO: [kaiho@m.tohoku.ac.jp](mailto:kaiho@m.tohoku.ac.jp)

# Important Notice and Schedules

## 1. Important Schedules

- a) Early registration and payment: ~~20 February, 2017~~. **20 March, 2017**
- b) Final registration and payment: 15 May, 2017.
- c) Deadline for abstracts: ~~20 February, 2017~~, **20 March 2017**.  
The registration fee will rise up after the deadline of early registration.
- d) Deadline for field excursions and payment: ~~20 February, 2017~~. **20 March 2017**.

## 2. Language

Any communication, documents and presentation should be in English.

## 3. Sessions

**a) Session 1: Permian-Triassic Climatic & Environmental Extremes and Biotic Response**

**b) Session 2: The Other Climatic & Environmental Extremes and Biotic Response**

To understand cause, process, and biotic response of Permian-Triassic Extreme, the other climatic and environmental extremes and biotic response should be also discussed.

**c) Session 3: Climate and Environment Modeling for All Geological Ages**

Climate and environmental changes are keys for the P-Tr event. Therefore, we also added a session on climate and environment modeling.

## 4. Abstracts, oral or poster

Due to the limited session time, the following rules will apply for whoever is willing to have presentations, except for our requests.

- a) Number of oral presentation and choice of oral or poster one:
  - a-1) Only one talk by each first author for each session. More than one talks in the same session is not allowed.
  - a-2) You can submit one abstract for each session.
  - a-3) In being over 68 oral requests, your abstracts of the second and third priority for oral presentation may move to the poster presentation.
  - a-4) The abstract of the first priority for oral should be checked on the “oral” option on the website. “Oral” option is available only for one abstract. Others would be checked on “oral or poster” or “poster” on the website.
- b) Abstract format

b-a) The format available from the following website: <https://amarys-jtb.jp/icgp630/>

## 5. Transportation for the conference place, Sendai

1. The international flight for Tokyo/Narita, Tokyo/Haneda, or Sendai Airport is convenience in general.
2. No domestic flights between Tokyo/Haneda and Sendai Airport. Two flights between Tokyo/Narita and Sendai Airport are available everyday.
3. You catch “Tohoku Shinkansen” (東北新幹線) from JR Tokyo Station to JR Sendai Station. If you have a plan to travel in Japan by JR Lines, we recommend to buy JAPAN RAIL PASS on the airport in Japan (See <http://www.japanrailpass.net/en/index.html>).



© Tohoku University

4. You should have enough time to move between the airport and Sendai (Six to eight hours). Details MUST be referred for to the following website ( <http://www.sci.tohoku.ac.jp/english/access/> )

## 6. Accommodation and transportation for the conference places

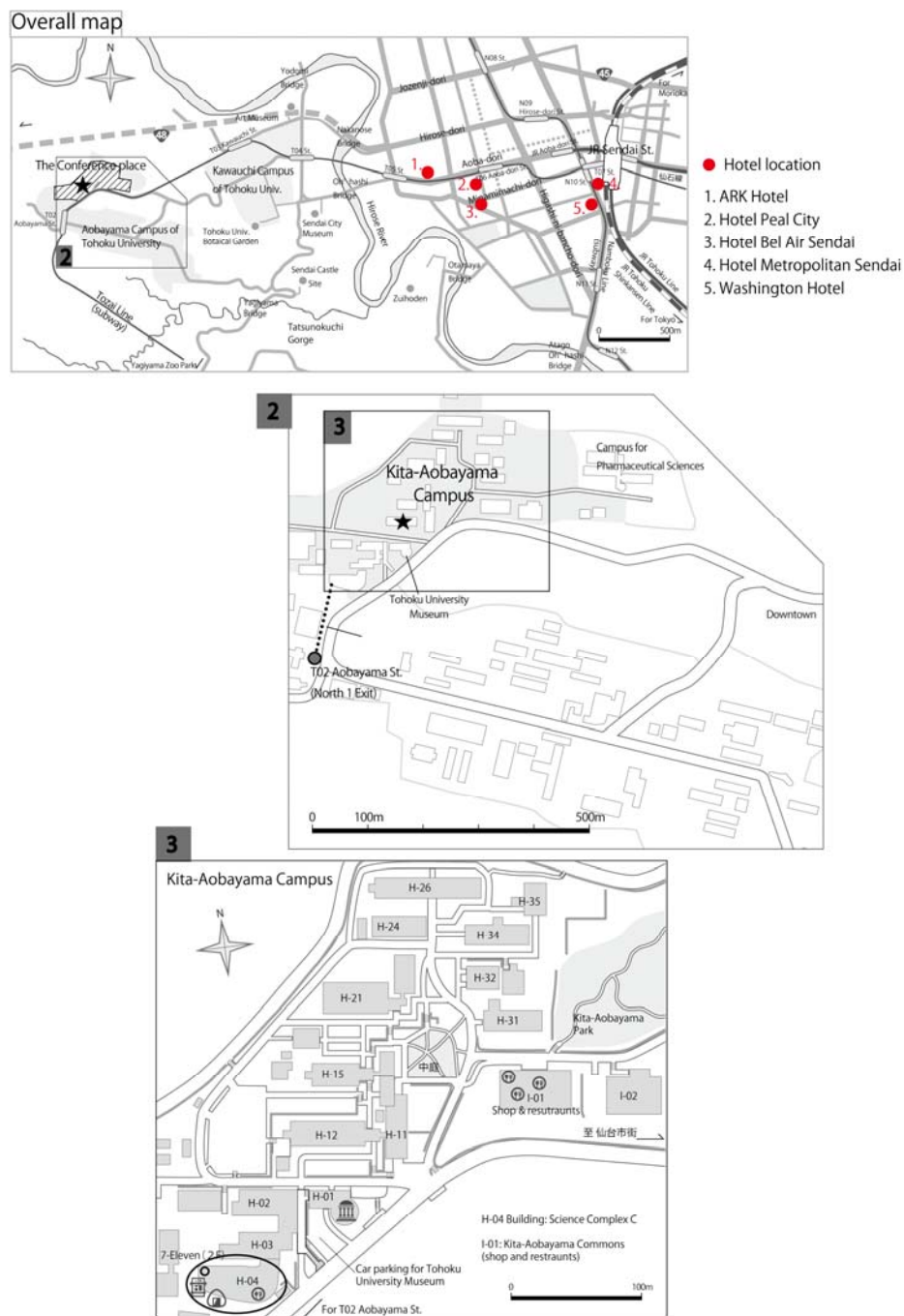
Recommended hotel will be introduced on our website. It is noted that the accommodation fee is based on each person but not each room. If you book a room for two persons, you need to pay twice the price. If you find the hotel by yourself, a hotel near the JR Sendai Station is recommend rather than that close to our campus, due to poor transportation system. You can access the H-04 Building by a few minute walk from the North 1 Exit of the Aobayama Station (Code T02) of the subway Tozai Line.

## 7. Website for your registration, payment, accommodation, abstract submission

The on-line system “AMARYS” open from the end of the December for registration, abstract submission, information on accommodations, choice of options (conference dinner, field excursion) (exclusive of special sightseeing tours), payments (exclusive of hotel accommodation fee).

<https://amarys-jtb.jp/icgp630/>

The Japanese Yen Currency by Credit card is only acceptable in AMARYS. However, those who wish overseas remittance etc. could ask us (JTB, travel agent) for request.



Maps for the meeting place (H-04 Building), in the Kita-Aobayama Campus of Tohoku University. Hotel locations are also shown with red solid circles.

# Outline of the Planned Programs

## 14 (Wed)/June/2017 – 16 (Fri)/June/2017

14th (Wed) at Aobayama Campus, Tohoku University

8:30 – 16:00: Opening Ceremony, Main Scientific Session

16:00 – 17:00: Poser Session

15th (Tue) at Aobayama Campus, Tohoku University

8:30 – 12:00: Main Scientific Session

13:00 – 17:00: Special Sessions

13:00 – 15:00 \*Outreach Talk by guest speakers

13:00 – 15:00 \*Special Exhibitions on the Permian–Triassic of Japan

15:00 – 17:00 \*Plenary Talks on Climate and Environment Modelling

18:00 – 20:00 Welcome Party (near the Sendai Station)

16th (Fri) at Aobayama Campus, Tohoku University

8:30 – 12:00 Main Scientific Session

13:00 – 16:00 Main Scientific Session, Closing Ceremony

after 16:30 Those who attend any post-excursions travel to Ishinomaki or Utsunomiya

## 17 (Sat)/June/2017 – 18 (Fri)/June/2017

Two excursions (Excursion 1 Utatsu and Excursion 2 Kuzuu) are planned.

### Excursion 1: Utatsu

16th (Fri): Stay at Hotel Route-Inn Ishinomaki Kanan Inter, Ishinomaki

17th (Sat) 8:00 – 17:35: Bus tour on Tsunami Disaster and field trip in Utatsu

Stay at the same hotel

Farewell party

18th (Sun) 8:45 – 14:10: Matsushima Bay

End of the Field trip at JR Sendai Station at 14:10

Those who registered to the Excursion 3 (pelagic P-T boundary) travel to Morioka.

### Excursion 2: Kuzuu

16th (Fri): Stay at Hotel Itaya, Utsunomiya

17th (Sat) 8:30 – 17:00: Field trip in Ogama and Kuzuu

Stay at the same hotel

Farewell party

18th (Sun) 9:00 – 14:30:

End of the Field trip at JR Utsunomiya Station at 14:30

Those who registered to the Excursion 3 (pelagic P-T boundary) travel to Morioka.

### **19 (Mon)/June/2017 – 20 (Fri)/June/2017**

#### **Excursion 3: Akkamori (Pelagic P – T boundary)**

18th (Sun): Stay at Metropolitan Hotel in Morioka

19th (Mon) 8:00 – 17:00: Field trip for Akkamori-section

Stay at Kuzumaki Greentage Hotel

20th (Tue) 8:00 – 15:00: Field trip for Otori

End of the Field trip at JR Morioka Station at 17:00

## **On-demand Special Sightseeing Tours for Accompanying Persons**

We provide two plans for accompanying persons. You simply wait the meeting point and pay a registration fee by CASH before the tour starts on the day.

### **Afternoon on 14 (Wed)/June/2017: Sendai Umino-Mori Aquarium and Shopping (MITSUI OUTLET PARK SENDAI PORT)**

Start at 13:00 from the front of the reception for this meeting. End at the JR Sendai Station.

### **Morning on 15 (Fri)/June/2017: Sightseeing in Sendai (Sendai Castle Site and Zuihoden (the fantastic classical-Japanese style mausoleum))**

Sendai Castle Site: <http://sendai-travel.jp/places/sendai-castle-site/>

Zuihoden: <http://www.zuihoden.com/en/>

Start at 8:30 from the front of the reception for this meeting. End at the JR Station.



# Details on the Schedules

## 1. Main Sessions

1st day: 14 June 2017 (Wed)

8:30-12:00 Oral presentation with one coffee break

13:00-16:00 Oral presentation with one coffee break

16:00-17:00 Poster session.

2nd day: 15 June 2017 (Thu)

8:30-12:00 Oral presentation with one coffee break

13:00-17:00 Mid-day Special Programs (See below)

18:00-20:00 Welcome Party (near the Sendai Station)

3rd day: 16 June 2017 (Fry)

8:30-12:00 Oral presentation with one coffee break

13:00-16:00 Oral presentation with one coffee break

Move to main cities of field excursions.

## 2. Mid-day Special Programs (15 June 2017)

a. Display of posters and fossils of the Permian-Triassic in Japan in the university natural history museum and stroll in the University Botanical Garden (13:00-15:00)

b. Lectures for Students and Japanese Participants by Invited Researchers (13:00-15:00)

c. Climate and Environment Modeling Session (15:00-17:00): Oral presentation



The holotype of *Utatusaurus*, the Olenekian ichthyopterygian fossil, displayed in Tohoku University Museum. This is one of the oldest ichthyopterygians in the world.



Regular exhibitions in Tohoku University Museum. Valuable collections of Department of Earth Science and Biology for 100 years.



University Botanical Garden where the original forest has kept more than 400 years

### **3. Post Field Excursion**

**Field Excursion 1 (Utatsu): Shallow sea mudstone and sandstone strata in the Olenekian and Anisian at Utatsu in South Kitakami Belt, Northeast Japan: 16-18 June**

***DAY 1: 16 June, 2017, Friday***

17:15 Leave Univ for Minami Sanriku town

18:30 Stay at Hotel Route-Inn Ishinomaki Kanan Inter (dinner NOT included in the fee)

***DAY 2: 17 June, Saturday***

8:00 Depart from Hotel Route-Inn Ishinomaki Kanan Inter

8:45- 9:40 Tsunami disaster bus tour

10:00-16:30 Utatsu district, Lower-Middle Triassic mudstone and calcareous sandstone strata, including the Osawa Formation bearing Olenekian ichthyopterygian fossil (*Utatusaurus* displayed in Tohoku University) and the Isatomae Formation bearing the middle Triassic ichthyopterygian fossil in the outcrop

12:00-12:40 Lunch at Utatsu (a lunch NOT included in the fee)

16:30 Leave Utatsu district for Ishinomaki City

17:35 Arrive at Hotel Route-Inn Ishinomaki Kanan Inter (the same hotel) (dinner NOT included in the fee)

### **DAY 3: 18 June, Sunday**

8:45 Leave hotel

9:30 Matsushima Bay, Visit Zuiganji Temple and Godaido Temple and board a sightseeing boat to overlook a lot of the scenic small islands

11:45-13:15 Lunch at Matsushima with free time (a lunch included in the fee)

13:15 Leave Matsushima

14: 10 End the excursion at JR Sendai Station



Lagerstätten site of the upper Olenekian shallow marine Osawa Formation. This is the unique locality in Japan for Thylacocephala fossils. Ammonoids including *Orthoceras* were also found from this site (Photo by Prof. Ehiro who reported the thylacocephala fossils here).



Matsushima Bay: more than 260 small islands making a beautiful contrast.  
(courtesy of Miyagi Prefecture Tourism Division)

**Field Excursion 2 (Kuzuu): Olenekian and Anisian deep-sea strata at Ogama, Kuzuu: 16-18 June**

***DAY 1: 16 June, 2017, Friday***

17:40 Leave JR Sendai Station

19:00 Arrive at JR Utsunomiya Station

Stay at Hotel Itaya, Utsunomiya City (dinner included in the fee)

***DAY 2: 17 June, Saturday***

8:30 Depart from Hotel Itaya

10:30-11:40 Ogama section, Ogama Olenekian and Anisian siliceous claystone and bedded chert sequence

11:50-12:15 Lunch at Japanese restaurant in Kuzuu (a lunch included in the fee)

13:30: Visit Yoshizawa Lime Industry Co.

14:00-15:30: Nishiyama area, Permian fusuliniid limestone and Jurassic radiolarian mudstone sequence

15:50 Visit Kuzuu Fossil Museum at Kuzuu

17:00 Leave Kuzuu for Utsunomiya City

Stay at Hotel Itaya (dinner included in the fee)

***DAY 3: 18 June, Sunday***

9:00 Leave the Hotel

9:30 Oya Parking, Look around Oya area and observe the Oya Formation and Oya Stone

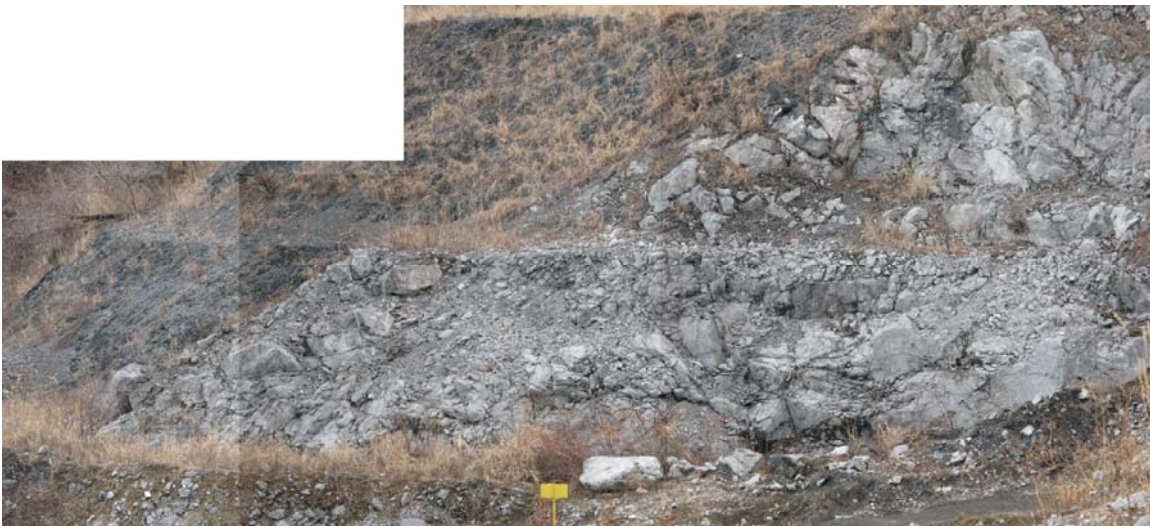
11:00 Visit Oya Stone Museum

11:00-12:00 underground old quarry place

14: 30 End the excursion at JR Utsunomiya Station



Ogama section, Olenekian and Anisian siliceous claystone and bedded chert sequence.



Nishiyama area in the Yoshizawa Lime Industry Co., the unconformable contact of the Jurassic deep-ocean pelagic radiolarian mudstones overlying the Permian fusulinid limestones of the sea-mount origin in the Panthalassa.

***(Note! The Excursion 3(Akkamori) starts after the Excursion 1 (Utatsu) and 2 (Kuzuu))***

**Field Excursion 3 (Akkamori): Pelagic deep-sea Permian-Triassic boundary at North Kitakami Belt, Northeast Japan**

Excursion Schedule:

**DAY 1: 18 June, 2017, Sunday**

Arrival at Morioka station

Stay overnight at Metropolitan Hotel in Morioka

(dinner NOT included in the fee)

**DAY 2: 19 June, Monday**

8:00 Leave Morioka

ca. 12:00 Lunch at Hayasaka (lunch included in the fee)

13:30 Arrival at Akka-mori section (one hour walk from the locality of Early Permian chert to Lower Triassic claystone locality)

16:00 Leave Akka-mori section (a half hour walk from the locality to a paved road)

18:00 Stay overnight at Hotel (Kuzumaki Greentage) (dinner included in the fee)

**DAY 3: 20 June, Monday**

8:00 Leave the Hotel

10:00 Visit locality of late Carboniferous-Jurassic deep-sea chert including Permian-Triassic black claystone bed (Otori),

11:00 Leave Otori

11:30 Visit mixed rock locality (Takayashiki)

Lunch (lunch box; a lunch included in the fee)

12:00 Leave Takayashiki

15:00 End the excursion at JR Morioka Station.

***(Note! It is impossible to catch any international flights in 20th, June. You must arrange your hotel on 20th and your flight on 21st or later)***



Pelagic sequence of the Permian chert to Lower Triassic claystone with the complete P-T boundary at the Akkamori section (Photo by Dr. Takahashi).



The Upper Carboniferous-Jurassic deep-sea chert at Otori. The approximate base of the chert sequence in the Jurassic accretionary complex of the North Kitakami Belt (Photo by Dr. Takahashi).

#### **4. On Demand Special Sightseeing Tours for Accompanied Persons**

##### **4.1. Sendai Umino-Mori Aquarium and Shopping (MITSUI OUTLET PARK SENDAI PORT)**

\*Sendai Umino-Mori Aquarium: <http://www.uminomori.jp/umino/en/index.html>

\*MITSUI OUTLET PARK SENDAI PORT: <http://www.31op.com/sendai/english/>

\*Start at 13:00 from the front of the reception for this meeting. End at the JR Sendai Station.

\*This tour is guided by volunteers for foreign guests from the Sendai Tourism, Convention and International Association.



Umino-Mori Aquarium in Sendai City.

#### **4.2. Sightseeing in Sendai (Sendai Castle Site and Zuihoden (the fantastic classical-Japanese style mausoleum))**

\*Sendai Castle Site: <http://sendai-travel.jp/places/sendai-castle-site/>

\*Zuihoden: <http://www.zuihoden.com/en/>

\*Start at 8:30 from the front of the reception for this meeting. End at the JR Station.

\*This tour is guided by volunteers for foreign guests from the Sendai Tourism, Convention and International Association.





## 5. Fee of registration, welcome party, and excursions

### 5.1. Registration fee:

#### [Early Payment Price]

16,000 JPY (Normal): till **20 March 2017**

10,000 JPY (student, retired and accompanied person): till **20 March 2017**

#### [Late Payment Price]

21,000 JPY (Normal): till 15 May 2017

15,000 JPY (student, retired and accompanied person): till 15 May 2017

Note: Food expenses are not included for all days.

### 5.2 Welcome party with meals:

7,000 JPY till **20 March 2017**; After 12,000 JPY

### 5.3 Field excursions

Field Excursion 1 (Utatsu): 45,000 JPY, payment till ~~20 February 2017~~ **20 March 2017**

Field Excursion 2 (Kuzuu): 49,000 JPY, payment till ~~20 February 2017~~ **20 March 2017**

Field Excursion 3 (Akkamori): 45,000 JPY, payment till ~~20 February 2017~~ **20 March 2017**

The combined Field Excursions 1 and 3: 90,000 JPY, payment till ~~20 February 2017~~ **20 March 2017**

The combined Field Excursions 2 and 3: 100,000 JPY, including train fare between Utsunomiya and Sendai, payment till ~~20 February 2017~~ **20 March 2017**

Note 1: Cancellation may occur less than 10 participants (In case of cancellation, we will refund it).

Note 2: Any lunch and dinner expenses are partly not included.

### Quick References for your payment

		Early payment fee (JPY)	Deadline	Late payment fee (JPY)	Deadline	Onsite	Comments
Accommodations		Not supported by the host					Please see our website
Registration	Normal	¥16,000	20-Feb-2017 <b>20-Mar-2017</b>	¥21,000	15-May-2017	¥41,000	
	Student, retired	¥10,000		¥15,000	15-May-2017	¥35,000	
	Accompanied persons	¥10,000		¥15,000	15-May-2017	¥35,000	
Welcome party	All	¥7,000		¥12,000	15-May-2017	¥14,000	
Field Excursion	1 (Utatsu)	¥45,000		Not allowed and automatically cancelled	Unacceptable		
	2 (Kuzuu)	¥49,000					
	3 (Akkamori)	¥45,000					
	1 & 3 (Utatsu & Akkamori)	¥90,000					
	2 & 3 (Kuzuu & Akkamori)	¥100,000					
Speical Sight Seeing Tours	1. Aquarium & Shopping	On demand					
	2. Sightseeing in Sendai						

\* The information in detail should be referred to the latest ciruclar

\* Cancellation is acceptable before 15/May/2017. We will ask handling fee.

\* Audience participation from Tohoku University is much welcomed without charge. Please show your ID card in the reception.

### Quick References on deadline

20-Feb-2017 <b>20-March-2017</b>	Early registration and payment
	Eary payment for welcome party
	Registration and payment for field excursion
	Submission for abstract
15-May-2017	Late registration and payment
	Late payment for welcome party

All registrations, payment, accommodation and submission for abstracts are available in <https://amarys-jtb.jp/icgp630/> from the mid January 2017.

### Summary of Schedules

Schedules	14 (Thu)	15 (Thu)	16 (Fri)	17 (Sat)	18 (Sun)	19 (Mon)	20 (Tue)
Main Scientific Session							
Excursion 1 (Utatsu)							
Excursion 2 (Kuzuu)							
Excursion 3 (Akkamori)							

See you in Sendai.

Best regards,

Kunio Kaiho